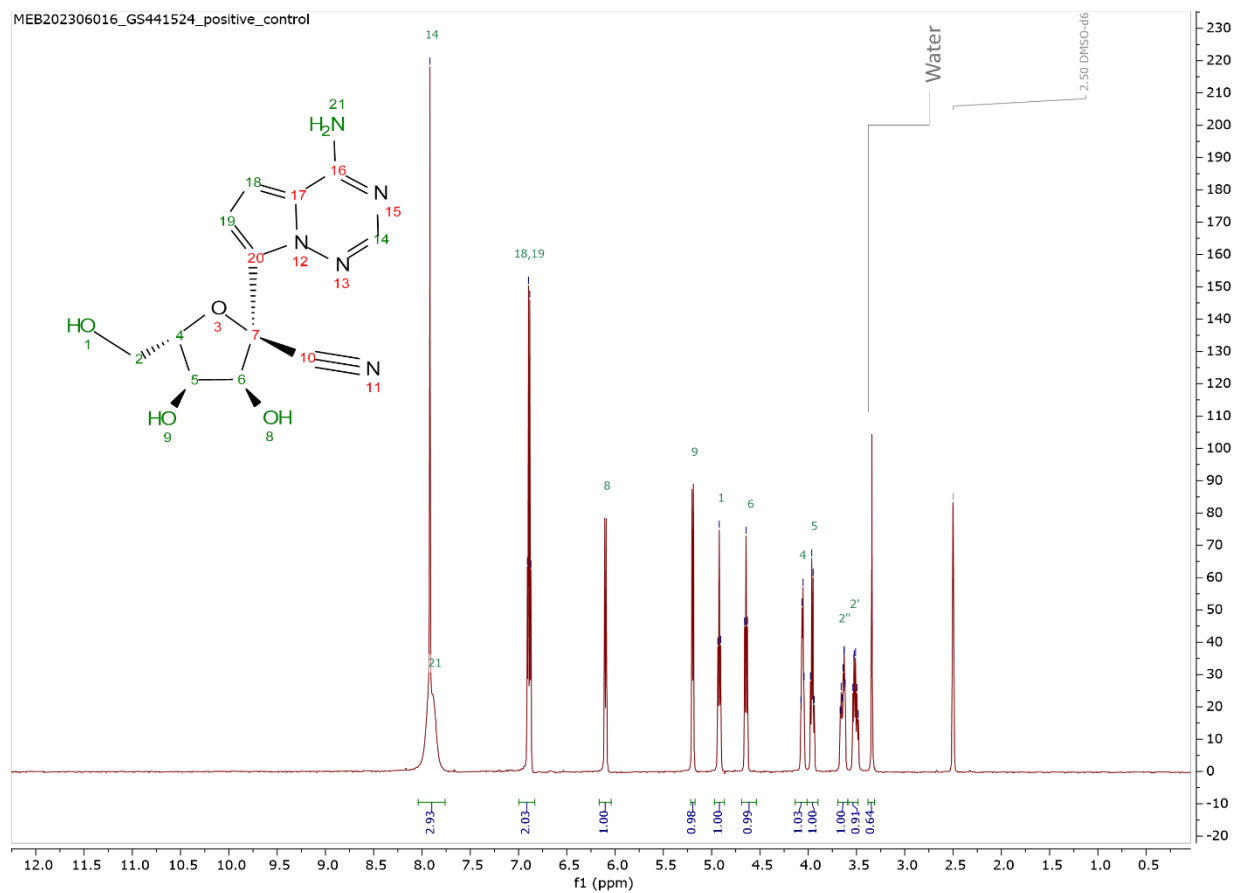


Figure S5 NMR of select GS-441524 vials

Proton NMRs of the positive control GS-441524 and the major HPLC peak for Panda and Shire brand GS-441524 with peak assignments for the positive control.

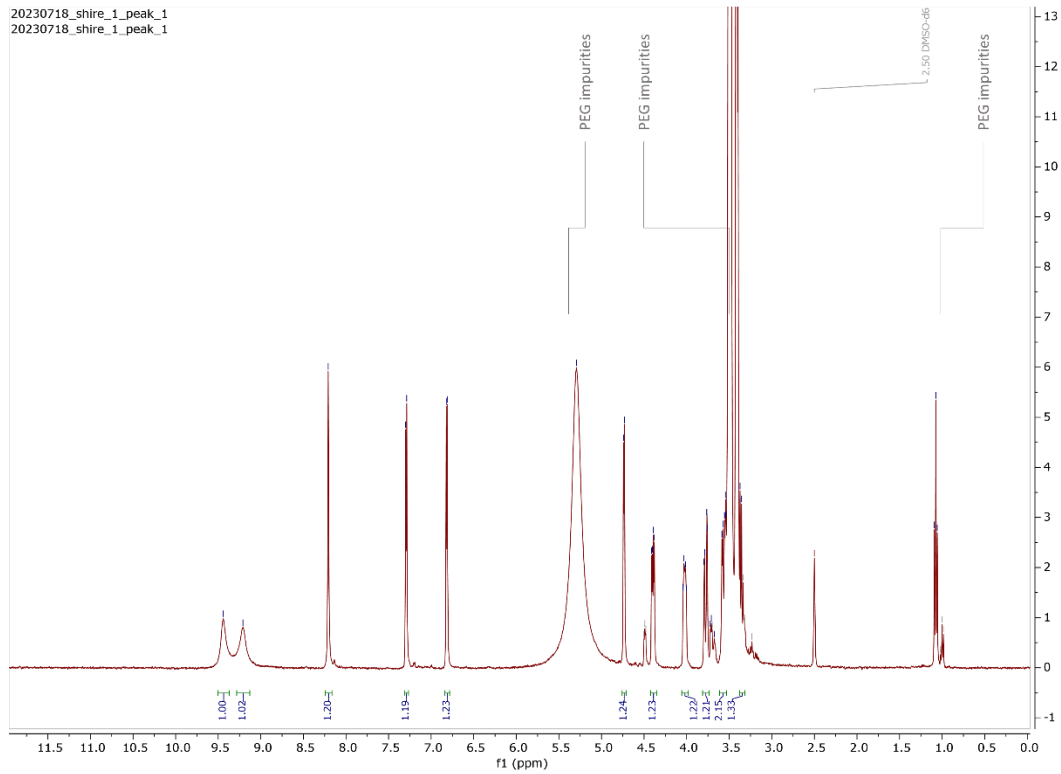
Positive control

^1H NMR (400 MHz, dmso) δ 7.92 (s, 3H), 6.89 (q, J = 4.5 Hz, 2H), 6.10 (d, J = 6.3 Hz, 1H), 5.20 (d, J = 5.2 Hz, 1H), 4.92 (t, J = 5.7 Hz, 1H), 4.64 (t, J = 5.7 Hz, 1H), 4.10 – 4.02 (m, 1H), 3.96 (q, J = 5.3 Hz, 1H), 3.69 – 3.59 (m, 1H), 3.55 – 3.46 (m, 1H).ii



Shire peak 1

^1H NMR (400 MHz, dms) δ 9.44 (s, 1H), 9.21 (s, 1H), 8.21 (s, 1H), 7.29 (d, $J = 4.6$ Hz, 1H), 6.82 (d, $J = 4.6$ Hz, 1H), 4.74 (d, $J = 4.2$ Hz, 1H), 4.42 – 4.35 (m, 1H), 4.06 – 3.98 (m, 1H), 3.81 – 3.74 (m, 1H), 3.61 – 3.53 (m, 2H), 3.36 (d, $J = 7.0$ Hz, 1H).



Panda peak 1

^1H NMR (400 MHz, dmsd) δ 8.67 (s, 1H), 8.41 (s, 1H), 8.05 (s, 1H), 7.08 (d, $J = 4.6$ Hz, 1H), 6.95 (d, $J = 4.6$ Hz, 1H), 4.60 (d, $J = 5.0$ Hz, 2H), 4.10 – 4.03 (m, 1H), 3.95 (t, $J = 5.4$ Hz, 1H), 3.69 – 3.59 (m, 1H), 3.47 (s, 1H), 3.42 (s, 1H), 3.40 – 3.38 (m, 1H).

