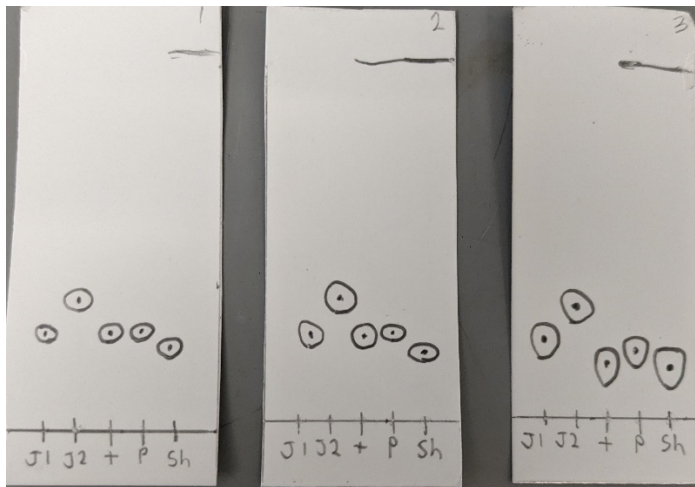


Figure S11 GC376 TLC plates

TLC plates

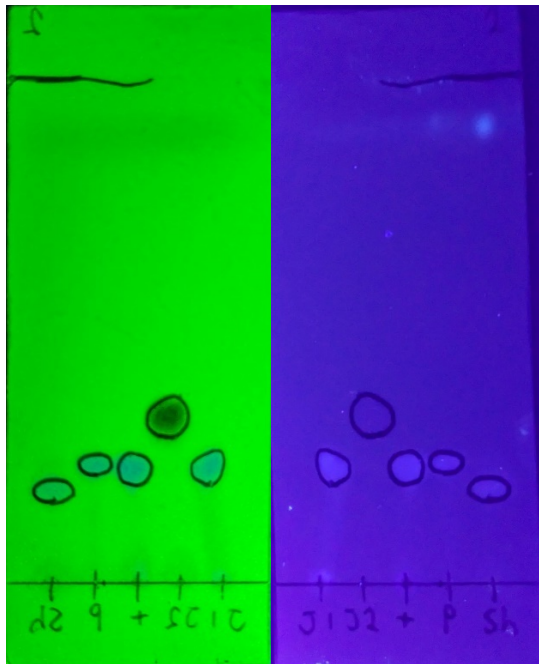
A. shows 3 replica thin layer chromatography plates developed in pure ethyl acetate showing GC376 vials JJ1 and JJ2 compared to our GS-441524 positive control and GS-441524 vials from Panda and Shire. B. shows plate 2 under 254 nm UV light and 365 nm UV light. C. 4 replica plates showing JJ1-JJ5 all run under ethyl acetate.

A.



B. 254 nm

365 nm



C.

