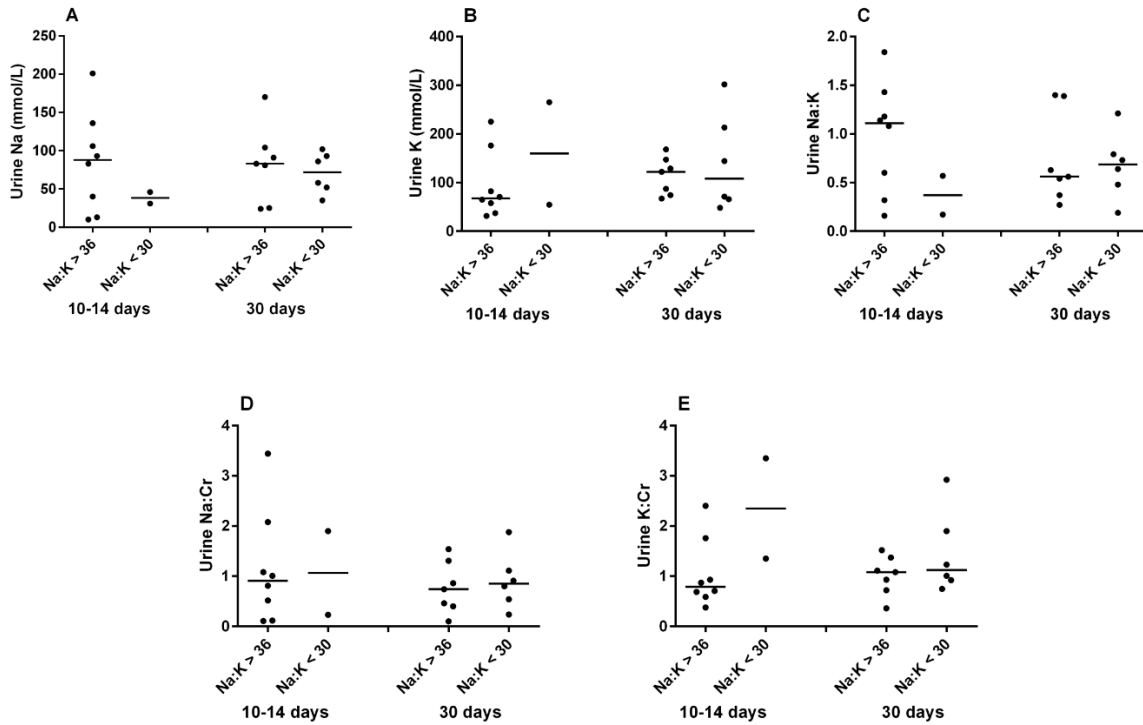


Supplementary Figure



Supplementary Figure S1—Scatterplots depicting (A) urine sodium (Na) concentrations, (B) urine potassium (K) concentrations, (C) urine sodium to potassium (Na:K) ratios, (D) urine sodium to creatinine (Na:Cr) ratios, and (E) urine potassium to creatinine (K:Cr) ratios in dogs with primary hypoadrenocorticism that were over-treated or undertreated with DOCP. Treatment adequacy was based on serum Na:K ratios (reference interval, 29-37), with a serum Na:K ratio > 36 considered indicative of over-treatment and a serum Na:K ratio < 30 considered indicative of under-treatment. Each figure panel depicts 2 time-points, which included 10-14 days after the initial DOCP injection and 30 days after the initial DOCP injection. The horizontal line within each scatter represents the median.