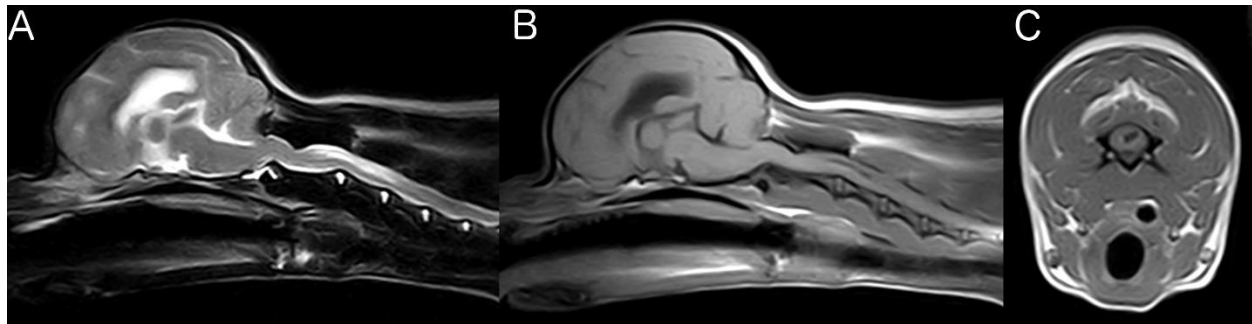


Supplementary Figure S1—Preoperative mid-sagittal T2-weighted (A) and T1-weighted (B) MRI images of the brain and cranial cervical spinal cord of case 1 as well as a T1-weighted MRI image at the level of C2 body through the syrinx (C).



Supplementary Figure S2—Follow-up MRI 6 months after surgery in case 1; mid-sagittal T2- (A) and T1- (B) weighted MRIs of the brain and cranial cervical spinal cord showed increase of the caudal cranial fossa size and the rounded aspect of the caudal cerebellum, nevertheless the artifact secondary to the metallic nature of the implant; T1-weighted MRI at the level of C2 through the syrinx of the same case (C) showed syrinx reduction. Despite looking different, ventricle size didn't change after surgery.

